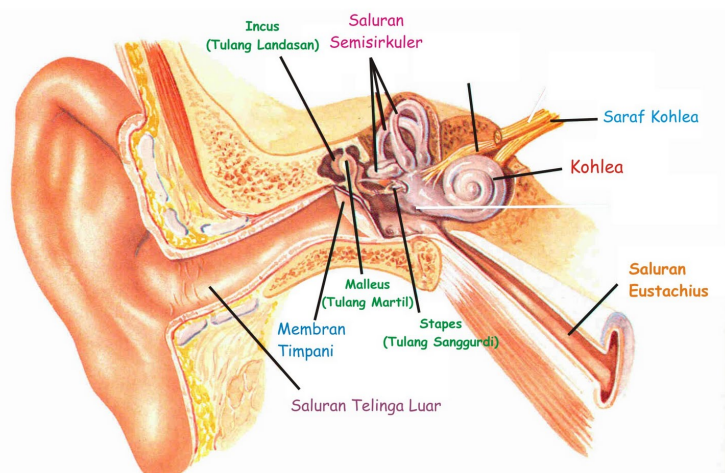
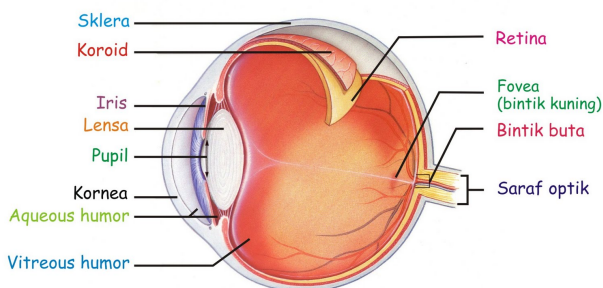


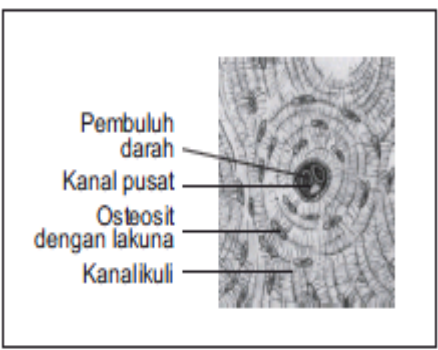
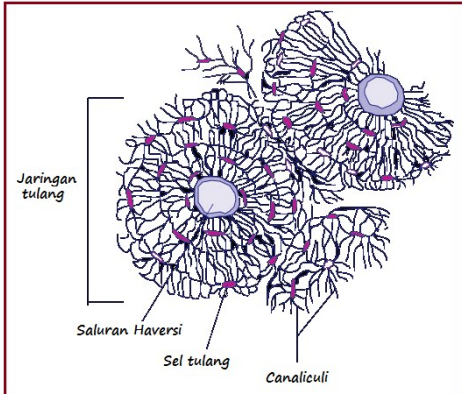
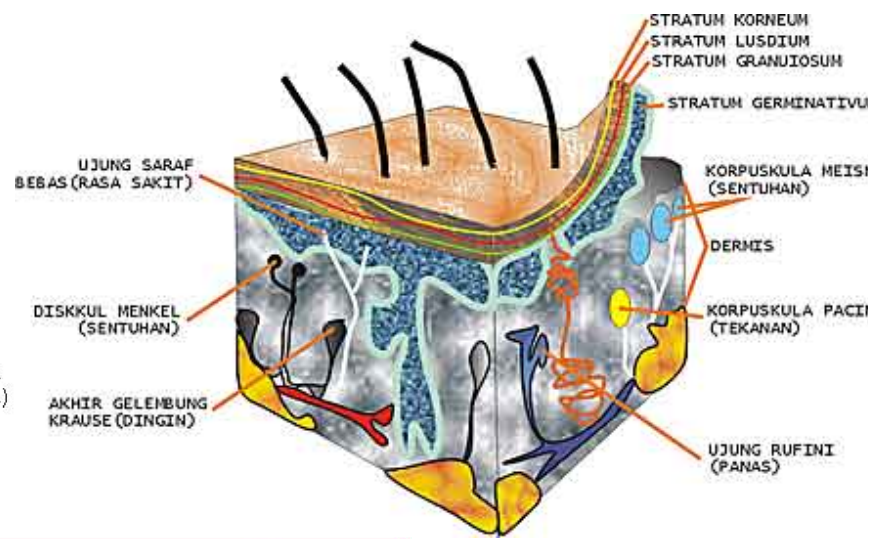
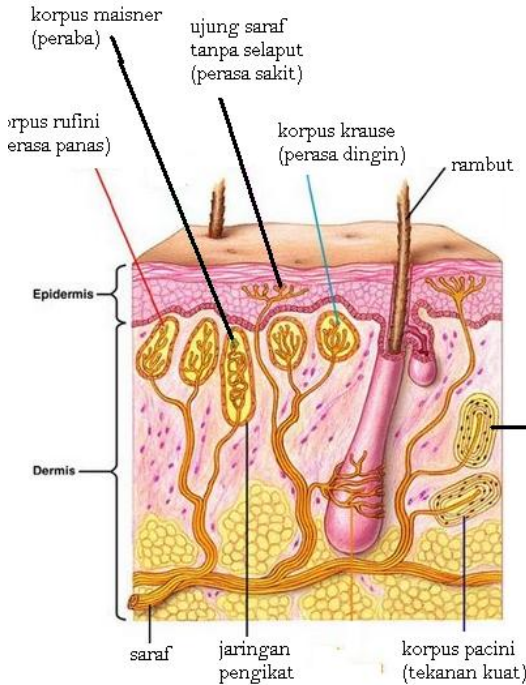
Gambar : Sistem respirasi pada manusia (kiri) dan struktur alveolus (kanan). (Sumber : Campbell et al. 1999).

Bagian-Bagian Telinga

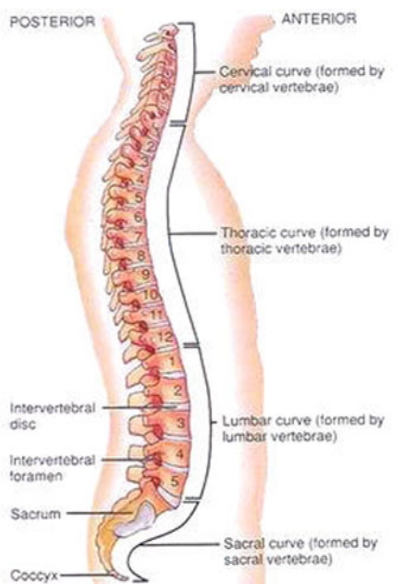
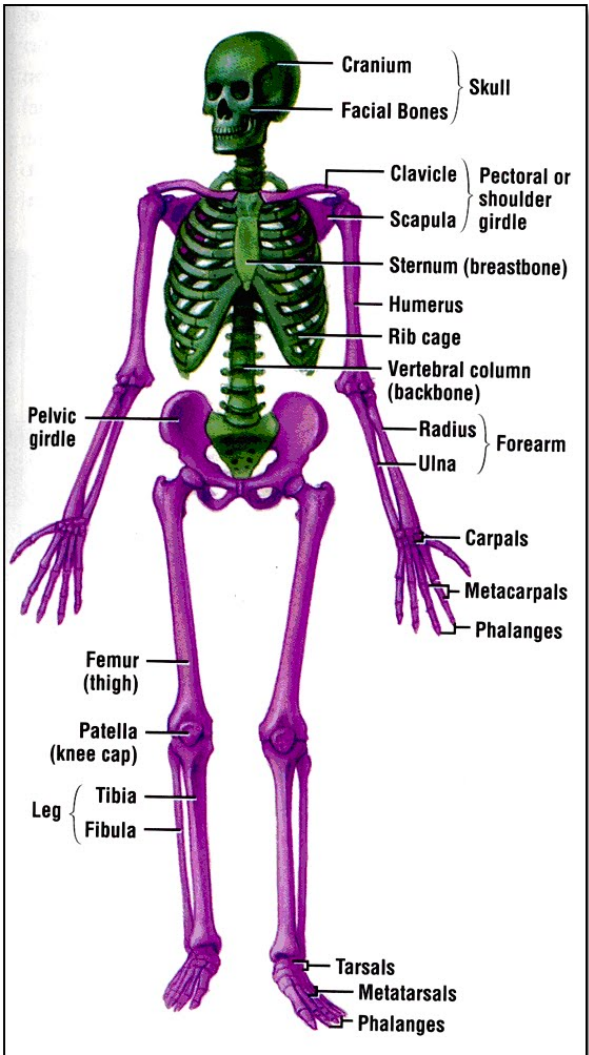


Bagian-Bagian Mata

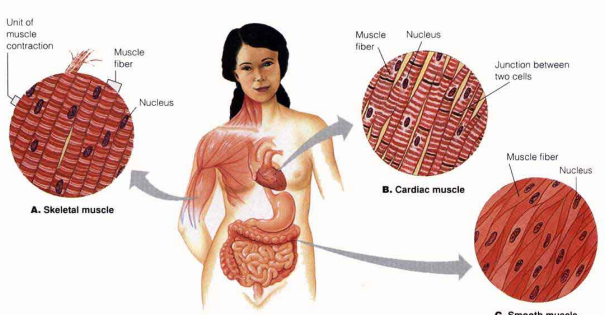
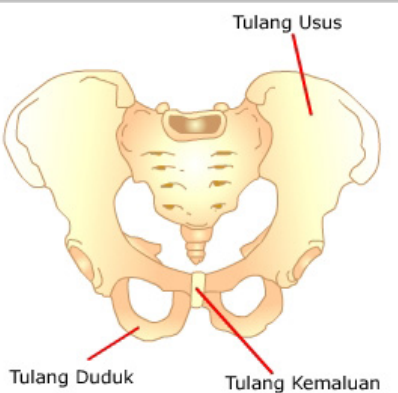
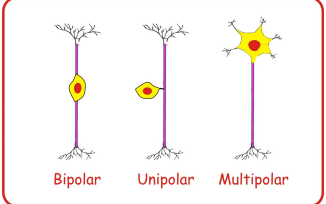
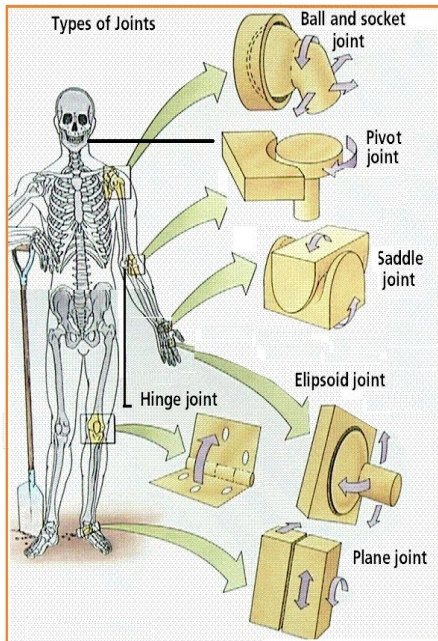




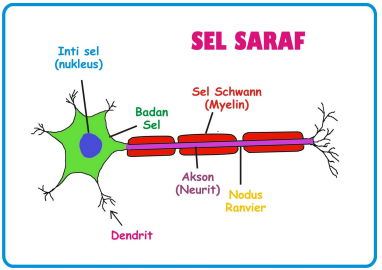
Sumber: Biology, Raven & Johnson



Vertebral Column (Right Lateral View) © 1993 by McGraw-Hill, College Publishers.

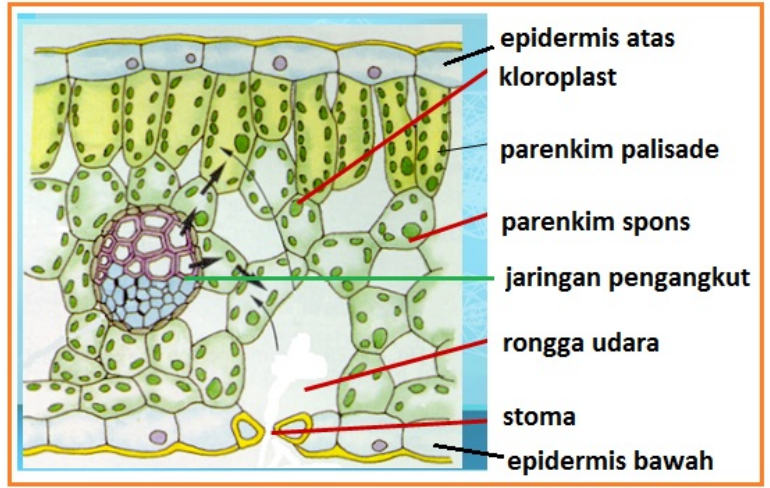
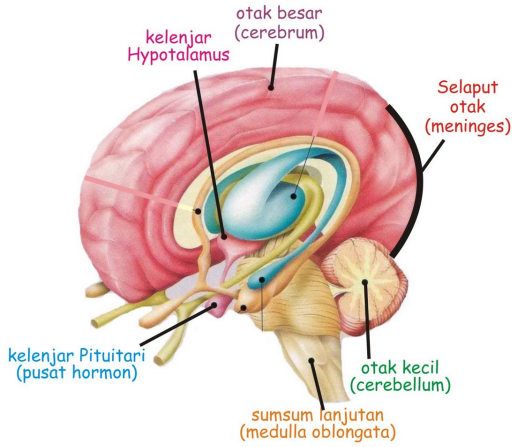












Gambar: Tiga tipe jaringan otot: (a) otot skelet, (b) otot jantung, dan (c) otot polos. (Sumber: Campbell et al. 1999).



SEL SARAF

Bagian-Bagian Otak



| Keping Biji | Tulang Daun | Batang | Bunga | Akar |
|---|--|--|--|---|
| Monocotyledoneae  Satu kotiledon |  Tulang daun sejajar atau melengkung |  Berkas pengangkut tersebar |  Bagian perhiasan bunga hanya terdiri dari 3 atau kelipatannya |  Sistem akar serabut |
| Dicotyledoneae  Dua kotiledon |  Tulang daun menyirip atau menjari |  Berkas pengangkut tersusun dalam suatu lingkaran |  Bagian perhiasan bunga terdiri dari 2, 4, 5, atau kelipatannya |  Sistem akar tunggang |

